



Adaptive

The Ultimate Cup

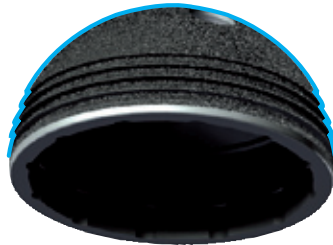


imagine³

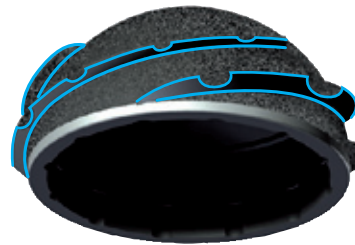
imagine **1** mind that believes in **3** different philosophies



ADAPTIVE
WINGS



ADAPTIVE



ADAPTIVE
HELICOIDAL

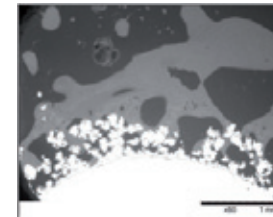
All the Adaptive family components make use of *Ti-Coat* technology, porous titanium VPS deposited with a thin additional HA layer.

The 12 weeks bone ingrowth average value on *Ti-Coat* shows an increase of 16% in comparison with state of art porous titanium VPS deposited.

studies of the University of New South Wales, Sidney

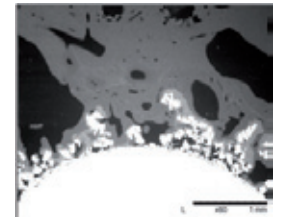
**12 WEEKS BONE INGROWTH AVERAGE
VALUE**

35%



porous titanium

41%



Ti-Coat

adaptive

confidence³

The Adaptive Integrated System guarantees the best possible mechanical interlocking coupling through 3 different concepts

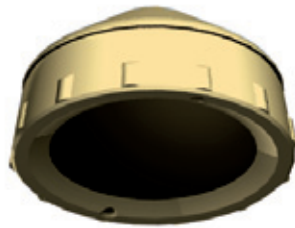


- 1** **Daisy-lock** design anti rotation system through equatorial tabs
- 2** **Morse taper** anti pumping system, the ultimate sealing
- 3** **Snap-on** anti pull-out system

Adaptive

interface⁴

Adaptive give the possibility to approach 4 different technologies and 4 different biomaterials tailoring the right device for any clinical situation

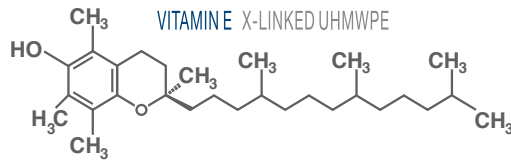


VITAE™
VITAMINE X-LINKED UHMWPE

UHMWPE

BIOLOX® DELTA

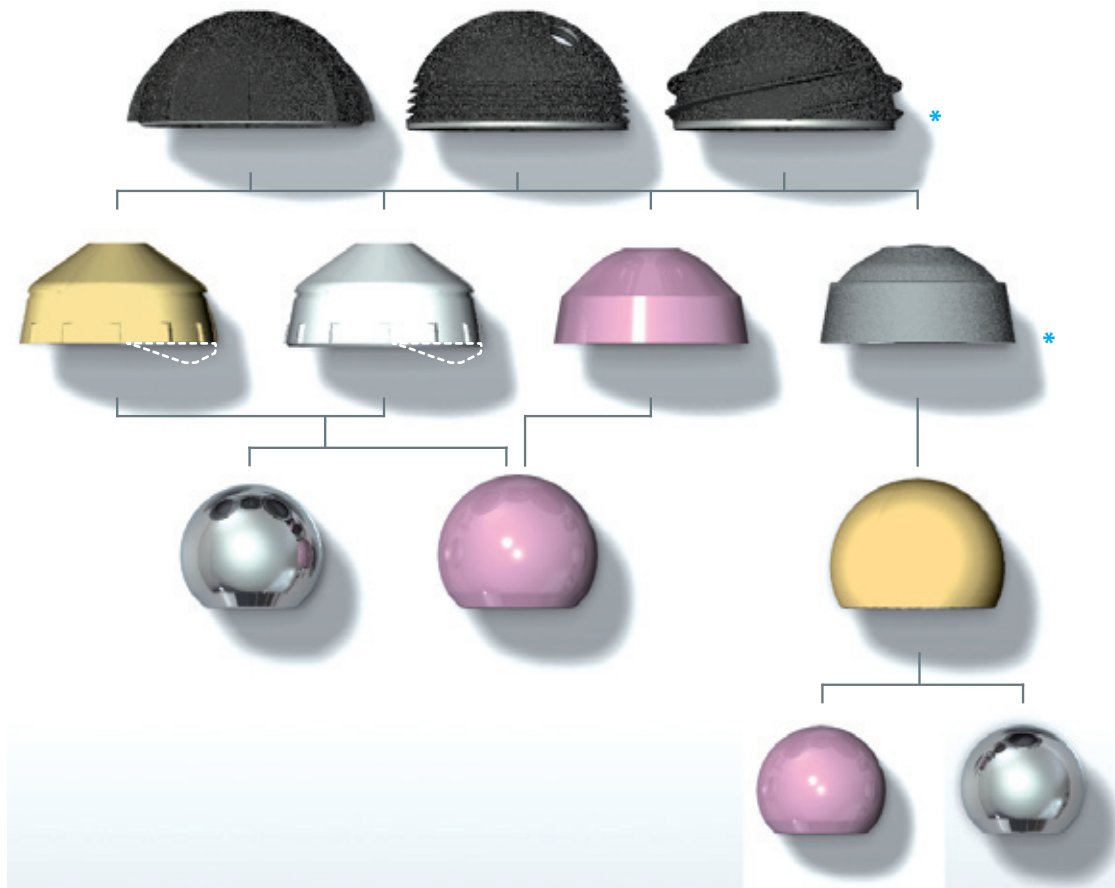
METAL
only for Double Mobility



adaptive

flexible

The Adaptive Integrated System components guarantee to reach the right coupling and stability according with to clinical requirements, featuring also the double mobility concept as an additional possible solution



Ball head Ø related to the system coupling		Cup Ø (mm)	Group and Color code
BIOLOX DELTA	VITAE UHMWPE		
28	22	42**	A ●
32	28	44	D ●
32	28	46	
32	28	48	
36	32	50	F ●
36	32	52	
40	36	54	G ●
40	36	56	
40	40	58	H ●
40	40	60	
40	40	62	
40	40	64**	
40	40	67**	
40	40	70**	

* available from 1/2012 ** not available for Screwed

next best to essence



samobiomedica.com

